



Terracan



Breaking New Ground

On and off the road, Terracan rules. It's Hyundai's biggest and most powerful SUV yet. Rugged and refined, Terracan comes with a well-equipped interior that gives you the length, width and height that you need for uncompromising comfort and cargo hauling capability. Its wide, powerful stance and sophisticated suspension ensure the smoothest possible ride around town or on the trail. Plus, Hyundai offers a choice of powerful engines and four-wheel drive systems that are unmatched in reliability and efficiency. Discover more about Terracan in the following pages and the pleasures of driving beyond boundaries.





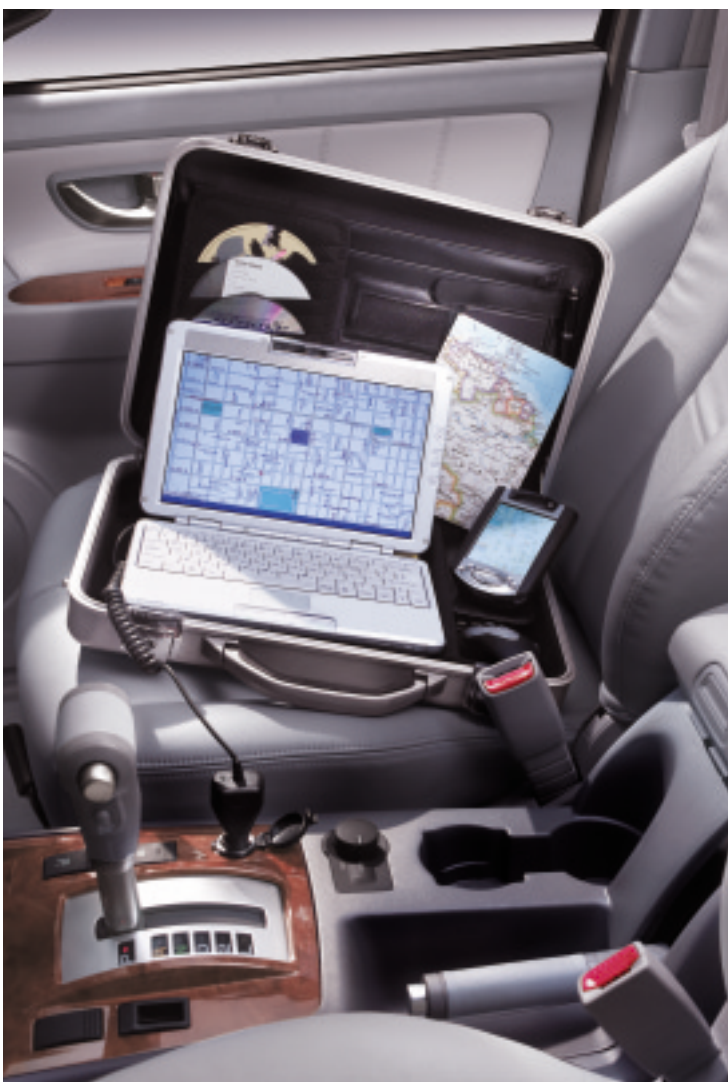
* The above image has been created to assist in understanding the product.



Power up a new sense of purpose

The promise of adventure never looked better than in the shape of the Hyundai Terracan. This is a car which disregards normal boundaries. Where the road stops the real challenge begins. One that Terracan meets with sure-footed distinction. Elegant, yes, but the business-like integrated side cladding, completes with stylish and well protected lighting, all work together with the solid stance, to tell you that here is something special. A vehicle you can depend upon however tough the task, Terracan.





Control with a dynamic new capability

Sovereign on the road and superb off it, the Terracan adds style and comfort to go-anywhere toughness. Take a look at the superb new white dials of the instrument cluster. Open the sunroof and enjoy the fresh air. Explore the convenience of the 2-tier centre console, just lift the “pop-up” armrest for storage space. Notice the convenient double cup holders front and rear. There are also three power outlets in the front and back, the ideal way to keep your laptop handy when Terracan doubles as your mobile office or second home.

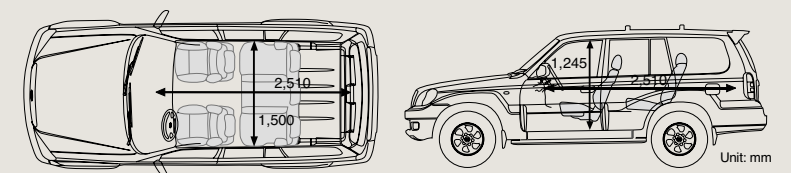
Keeping It Fresh
Multi-point ventilation ducts deliver a continuous stream of fresh air and ensure a uniform temperature throughout the cabin. Terracan's climate control system is exceptionally powerful to warm up and cool down the interior with maximum efficiency.





Terracan. Tough outside, serene inside, **excellent throughout**

Who knows where your next journey will take you. Maybe to the shops, across the continent or through the desert. So enjoy it. In designing Terracan your comfort both on and off the highway was a prime motivator. You and your passengers can relax into a new feeling of wellbeing. Ample and spacious on the road, the deep seat contours are also supportive and secure when the terrain gets rough. The best of all possible worlds. But they also offer exceptional flexibility. If you want to rest, just fully recline the front seats and stretch out. Need extra luggage or load space? The Terracan offers more seating and storage combinations than most estate cars. The rear row can be folded against the sides, the second row features 60/40 split convenience. So whoever and whatever you want to take with, you will always find ample room and comfort.



Room for adventure

Terracan offers more than just the best interior space package in class. Great equipment, thoughtful design and exceptional quality blend into a uniquely practical feeling of inner contentment.

Terracan Rules the Earth

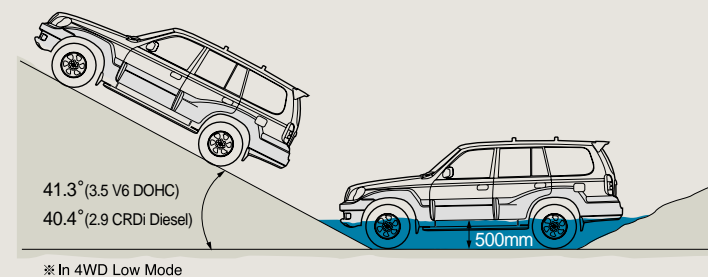
The ultimate Hyundai SUV that's ready for anything, anywhere.



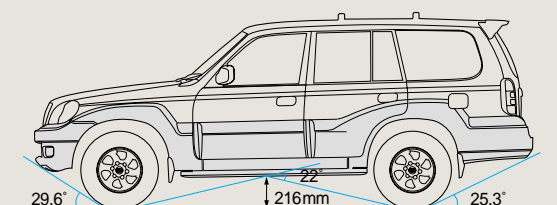


Empowering an **intense sense of personal freedom**

One look at Terracan is usually enough to start anyone's imagination ranging over paths yet to be explored. The reality will certainly not disappoint. Two flexible and powerful engines not only make light work of the everyday, they positively inspire through exceptional driving pleasure. Whether your choice is the exceptional DOHC 3.5 litre petrol, or the 2.9 CRDi common rail direct injection diesel, there is power in plenty. The 3.5, for example delivers 143kW at 5500 rpm, hitting peak torque of 294N.m at just 3000 rpm. The rugged yet sophisticated 2.9 CRDi offers 120kW at 3800 rpm and a massive 345N.m torque at 1750~3000rpm. A choice of 5-speed manual or 4-speed automatic complements them in every way. The result is all of the long lived reliability, smoothness and practicality you naturally expect from Hyundai.



※ In 4WD Low Mode



Just Keep Going

Experience the exhilarating freedom of Terracan's 4WD system that will take you beyond all boundaries. With its 216mm ground clearance and large angles of approach, departure and ramp break-over you can just keep going wherever your heart takes you. The angle of Max. Climbing ability in 4WD Low Mode varies with your choice of engine.

3.5 V6 Engine
Silent and powerful, the gasoline fueled V6 features an aluminum alloy head, 24 valves and dual overhead camshafts for lightning fast take-offs.(optional)

Full-Time 4WD
This optional system utilizes electronically controlled Active Torque Transfer(ATT) to apportion torque among the four wheels for maximum grip.

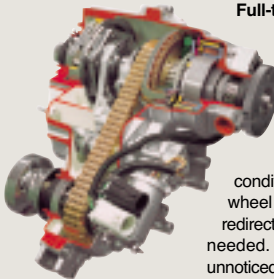
Double Wishbone Front Suspension
Commonly found on luxury sedans, the double wishbone suspension ensures a smooth stable ride and precise, sure-footed steering control.

LSD
The Limited Slip Differential automatically senses rear wheel slippage and transfers torque to the wheel with the greater traction. (optional)

Chassis
The frame is constructed from heavy-duty gauge steel and can safely withstand the massive twisting, bending and flexing forces encountered in off-road driving.

5-Link Rear Suspension
Sophisticated but exceptionally rugged, the 5-link design soaks up bone-jarring bumps with an ease and efficiency that's appreciated by rear seat passengers.






Full-time 4WD

Customers have the option of ordering Terracan's full-time 4WD system, which delivers the ultimate in 4X4 performance. Featuring Active Torque Transfer, this innovative torque on demand system employs sophisticated electronic controls and electronically controlled magnetic clutch to apportion power between the front and rear axles. Under normal conditions, all power is directed to the rear axle but if rear wheel slippage is detected, the transfer case automatically redirects power to the front axles for as long and as much as needed. The system works transparently and is completely unnoticed by the driver.

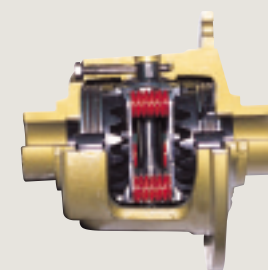
Part-time 4WD

At speeds of up to 80km/h, Terracan switches between 2WD and 4WD modes effortlessly (2H and 4H). 4L is reserved for slow maneuvering and maximum traction in the most difficult situations. Terracan's part-time 4WD feature is supplied as standard equipment on all models.



Never Shocking

No matter how far you tread off the beaten path, Terracan is designed to deliver a smooth and relaxing ride. Terracan's long wheelbase, extra-wide track and low center of gravity endow it with a highly secure stance for optimal stability. And, most importantly, you ride on a sophisticated suspension that includes a double wishbone setup in the front and a compound 5-link design in the rear. For added stability and improved handling characteristics, torsion bars are fitted on both the front and rear axles. Carefully calibrated coil springs work in tandem with gas-filled shock absorbers to ensure the smoothest possible ride.



Limited Slip Differential
Stuck in rut? Trouble climbing an icy hill? The Limited Slip Differential saves the day by detecting rear wheel spin and transferring power to the wheel with the better traction.





* The above image has been created to assist in understanding the product.



Safety Cell Construction
The protective safety cell sits between fore and aft crumple zones that absorb impact forces and keep the driver and passengers out of harms way.

Making It Safer and Safer

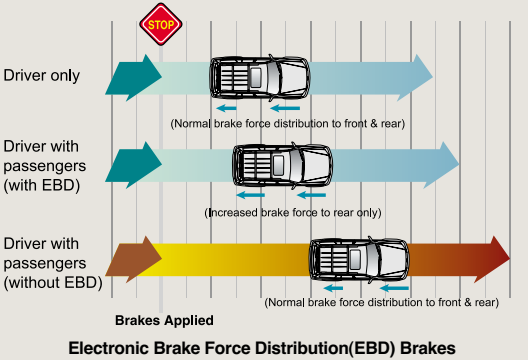
You can never be too rich, or too safe. That’s why at Hyundai, we are continually raising the bar when it comes to vehicle safety. To drive Terracan is to drive with the reassurance that you are surrounded by an exceptionally strong steel cell and protected by the most advanced safety mechanisms available today. Terracan’s body is reinforced at critical points, including the doors, bumpers and frame to cushion and safely disperse impact forces from whatever direction they may strike. At the very moment a collision



Airbags
Driver and dual(driver and passenger side) airbags are available as an option and are depowered to reduce the risk of injury.

occurs, Terracan’s seatbelt pretensioning mechanism pulls in the 3-point belts taut against the body within a split second thus preventing them from colliding with interior structures. Belt force limiters then pay out seat belt webbing to ensure that the upper torso meets the airbag under as much control as possible, further reducing the risk of injury.

EBD ABS
The optional Anti-lock Brake System comes with four-wheel disc brakes and Electronic Brake Force Distribution for shorter stopping distances and more controlled, straight line braking. EBD automatically apportions brake power between the front and rear axles in accordance with the vehicle load and weight distribution. Powerful self-adjusting drum brakes are fitted on the rear axle of non-ABS equipped models.





Terracan Will Never Let You Down

Combining the luxury appointments of luxury sedan with uncompromising off-road performance, Terracan provides the ultimate sport utility vehicle experience. And with its rugged body-on-frame construction, Terracan is built as tough as they come so you can count on Terracan to deliver years and years of reliable service. Terracan: It'll never let you down.



Technology that puts the environment first

At Hyundai Motor, a greener world is a more than a dream: It's an emerging reality thanks to the new technologies we are pursuing to optimize product life cycles and minimize the adverse impact of our vehicles on the environment. To help conserve scarce natural resources and reduce the pressure on landfills caused by needless waste, Hyundai Motor has been aggressively advancing its recycling program and implementing cleaner manufacturing concepts. Since the early '90s, Hyundai Motor Company has been making systematic efforts to improve its recycling program and in 1996, the company began a three-year national research project to develop a comprehensive program for the dismantling and recycling of end of life vehicles.



HYUNDAI CleanEnergy

Today, all automotive parts are systematically coded to facilitate recycling at the end of the vehicle life cycle. Moreover, in the design of complex assemblies, especially plastic assemblies preference is given to a single material composition in order to facilitate disassembly. All Hyundai Motor plants meet the environmental management standards defined by the International Standards Organization and are ISO14001 certified. Accordingly, the company's plants are making systematic efforts to reduce fresh water consumption, maximizing the use of reusable packaging whilst minimizing the use of restricted hazardous materials such as chromium compounds and mercury to cite but two examples. Furthermore, efforts are being stepped up to use more recycled steel, glass and plastics in the manufacturing of new car parts. Hyundai Motor suppliers and engineers are now working under new environmental directives: increase the recycled content of new cars whilst minimizing the use of raw materials and waste in production processes.



For more information

 <http://www.hyundai-motor.com>



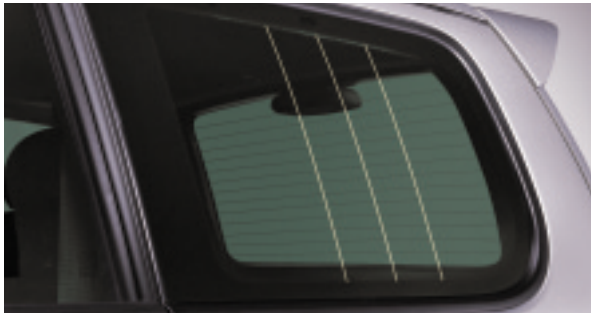
More TERRACAN





Sunroof

Enjoy the weather. The tilt and slide glass sunroof gives you real fresh air at the touch of a button.



Glass antenna

Unobtrusive and protected from incidental damage, the in-glass antenna is ideal for off-road or inner-city driving.



Rear spoiler

The rear spoiler delivers tough, functional wind deflection which adds to on-road stability and Terracan's great looks.



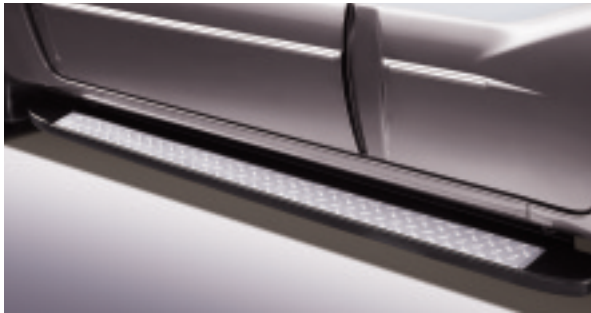
Projection-type fog lamps

Built-in fog lamps feature projection type lenses for a longer, more powerful beam.



Projection headlamps

The elegant but tough headlight clusters of Terracan have focused projection lenses with multi-focus reflectors. The result is brilliant, glare-reduced light whenever you need it.



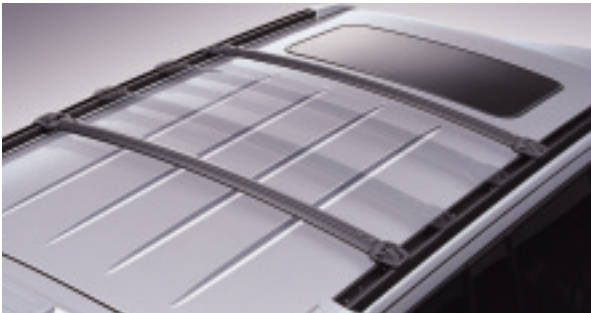
Side step

Form follows function with the new full-length side steps. Not only does the pattern add distinction, it also increases passenger security against slipping.



Windshield de-icer

Winter is a fact of life for most of us. Minimise the inconvenience and increase safety and vision with the unobtrusive, but highly effective, windscreen de-icer.



Roof carrier

Robust and practical, yet blended to the shape of Terracan by the fixed roof rails, the Roof carrier extends your load capacity without claiming interior space.



Side garnish

Tough but elegant side mouldings not only look dynamic and distinctive, they add an important extra element of protection against body damage.



Inside door handle

As elegant as a piece of sculpture, the door handles are recessed for safety, but practical and easy to grasp and operate.



Stalk control

Lights, wipers and washers are all handily grouped on one intuitively easy to use steering column control lever.



Power window switches

Hyundai attention to design and function extends even to the smallest details, such as easy-touch switches controlling door lock and power windows are conveniently located at the driver's fingertips.



Meter and gauge

Sporting and clear, the white gauges reflect the adventurous spirit of the Terracan while bringing you all the information you need.



Seat back pocket

Keep maps, magazines or even children's games and toys, within easy reach and not underfoot, with the strong and practical seat back pocket.



Center console

The centre console features a pop-up armrest for real long distance relaxation. Beneath it is useful storage for the journey necessities.



Rear centre armrest

The rear seat centre console delivers limousine style comfort in the form of the pull down armrest, complete with useful storage space and cup-holders.



Power outlets

Three standard power outlets, two in the front and rear of the centre console and one in the luggage space, keep cool boxes and other power needs supplied neatly and efficiently.



Under-seat tray

Out of sight, but never out of reach, the under-seat tray provides extra storage without intruding into the generous interior space.



Rear cup holders

The rear cup holders are centrally mounted, folding down from the rear of the console at the touch of a button, to hold your beverages securely.



Luggage screen & net

The luggage screen and net not only keep your luggage securely in place, but they also protect the good looks of your Terracan's interior.



Seating

Hyundai believes that an SUV should not be a second car, so we've built in more seating and load flexibility than many estate cars offer. For instance, just recline the front seats to really lay back and relax...



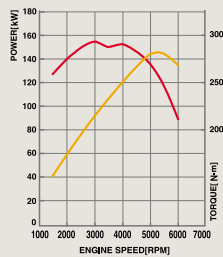
And space

Need real load space? No problem, it is the work of a few minutes to fold all the rear seats, leaving a massive amount of room for whatever your business or your leisure pursuits demand.



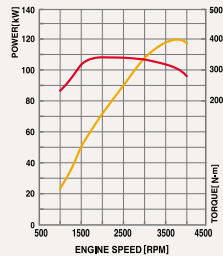
3.5 V6 MPI DOHC Engine

If you're looking for effortless sprinting performance and silent operation, the gasoline fueled 3.5-liter DOHC V6 offers the absolute pinnacle in performance. Extensively refined, this standard powerplant is unmatched in the smoothness and quietness of its power delivery. Featuring multi-point fuel injection system that's controlled by a digital engine management system, this engine achieves a maximum output of 143kw@5500rpm while peak torque of 294N.m is reached at 3000rpm.

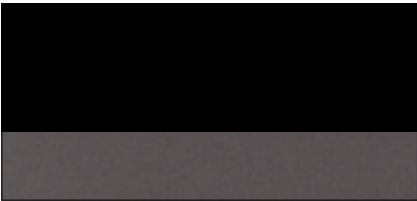


2.9 CRDi DIESEL

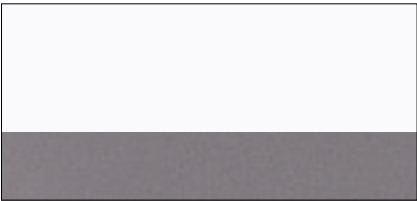
The flexible, rugged and smooth 2.9 CRDi (common rail direct injection) diesel engine. 120kW@3800 rpm and a massive 345N.m torque at 1750~3000rpm puts it right at the forefront of its class.



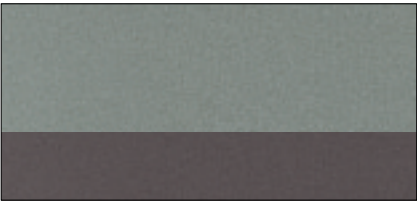
COLOR & TRIM GUIDE



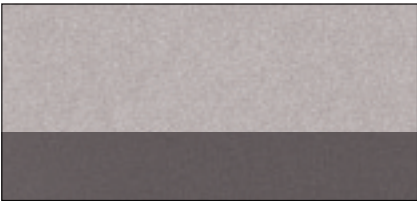
EB/HC (Ebony Black + Cool Gray)



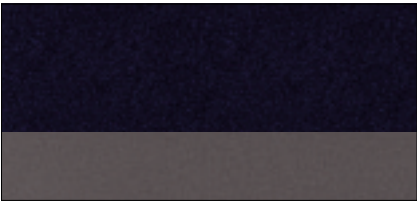
NW/PE (Noble White + Medium Silver)



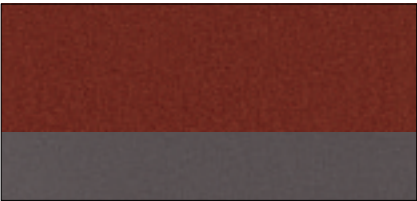
LQ/HC (Satin Green + Cool Gray)



YK/VG (Warm Silver + Warm Gray)



SD/HC (Mica Blue + Cool Gray)



VA/HC (Red Land + Cool Gray)



BY/VG (Prime Green + Warm Gray)

- The color plates shown may vary slightly from the actual colors due to the limitations of the printing process.
- Please consult your dealer for full information and availability on colors.



Leather (Beige)



Leather (Gray)



Cloth (Beige)



Cloth (Gray)

SPECIFICATIONS

ENGINE

Type	2.9 CRDi	3.5 V6 DOHC (Unleaded)
Displacement (cc)	2,902	3,497
Bore X Stroke (mm)	97.1 X 98	93 X 85.8
Compression Ratio	19.3	10
Max. Power (kW / rpm)	120 / 3,800	143 / 5,500
Max. Torque (N.m / rpm)	345 / 1,750~3,000	294 / 3,000
Cylinder Block	Iron	Iron
Cylinder Head	Aluminum	Aluminum
Ignition System	Compression Ignition	Distributorless Ignition
Valve System	Rocker Arm	Swing Arm
Fuel System	Common Rail Direct Injection	Multi Point Injection
Fuel Tank Capacity (liter)	75	

• On leaded fuel engines, power & torque figures vary in accordance with local fuel and climate characteristics.

DRIVE TRAIN

Type		Manual		Automatic	
Engine		2.9 CRDi	3.5 V6 DOHC	2.9 CRDi	3.5 V6 DOHC
		5-Speed Transaxle with Floor Shift		4-Speed Transaxle with Floor Shift	
Gear Ratio	1st	3.915	3.915	2.804	2.804
	2nd	2.126	2.126	1.531	1.531
	3rd	1.338	1.338	1.000	1.000
	4th	1.000	1.000	0.705	0.705
	5th	0.801	0.801	-	-
	Reverse	4.270	4.270	2.393	2.393
Final Gear Ratio		4.222	4.625	4.222	4.625
Clutch Type		Push type		-	
Lubricant Oil Capacity (liter)		3.2	3.2	11.8	10.5

TRANSFER

Type		Part-Time 4WD (STD)	Full-Time 4WD (OPT)
Gear Ratio	High		1.000
	Low		2.480
Lubricant Oil Capacity (liter)			1.420

WHEEL & TIRE

Wheel	Alloy Wheel 7.0J X 16
Tire	255 / 65 R16 106T
Spare Tire	Full Size

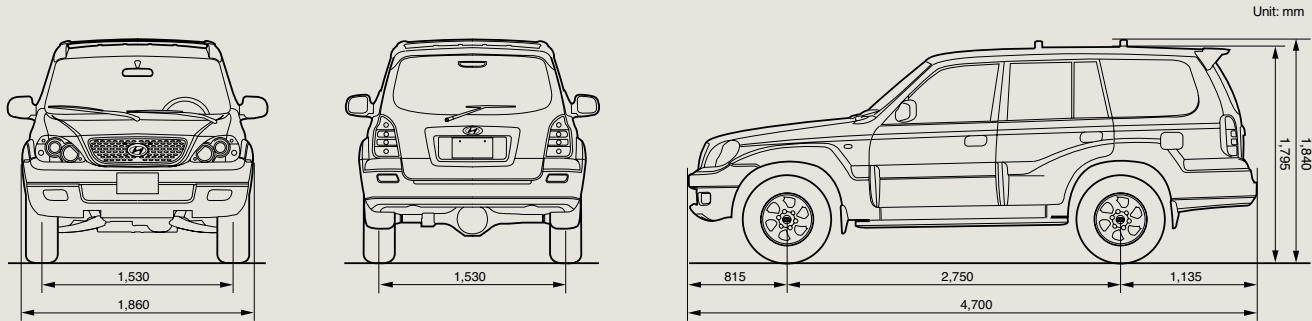
STEERING

Type	Ball & Nut Type with Power Assist
Steering Wheel	4-Spoke Type / Mg Armature
Overall Steering Gear Ratio	20.5
Min. Turning Radius (m)	5.9

SUSPENSION

Front	Independent Double Wishbone with Torsion Bar Spring, Anti - Roll Bar
Rear	Rigid Axle 5-Link with Coil Spring, Anti - Roll Bar
Shock absorber	Telescopic Gas, Double Acting Type

DIMENSIONS



• Some of the equipment illustrated or described in this catalogue may not be supplied as standard equipment and may be available at extra cost.
• Hyundai Motor Co. reserves the right to change specifications and equipment without prior notice.
• The color plates shown may vary slightly from the actual colors due to the limitations of the printing process.
• Please consult your dealer for full information and availability on colors and trim.